

TRIAD 2310



THE NEW

STANDARD

IN UNDERGROUND

LOCATING

TRIAD 2310
BY GOLDAK

TRIAD 2310

Experience Industry's Easiest to Use, Yet Most Powerful and High Performing Portable Under Ground Locator In Today's Marketplace!

PRODUCT DESCRIPTION

Goldak, Inc. proudly introduces the new TRIAD digital Locator, which will surely become the industry standard in portable locators. The Triad combines the versatility and power of a high-end multi-frequency system with an ultra-easy usability that is truly different. What makes the Triad so unique?

RECEIVER:

- Can operate with any continuous active transmitter frequency ranging from low audio (such as 512 Hz) up to radio frequencies (RF) as high as 200 KHz.
- Can automatically scan and tune to active frequencies or be tuned at the user's discretion.
- Intuitive audio/visual interface that is straightforward whether tracing pipes/cables, or locating coil-type transmitters ("sondes").
- Features include: single-trigger control, automatic gain, and automatic set-up options.
- Outstanding features include: automatic depth read-out, constant numerical response, search direction indicators, passive-mode locating, and many others.
- Lightweight and ergonomically balanced packaging allows the user to work comfortably for long periods of time.
- Folds into a compact storage position about the length of a forearm.

TRANSMITTER:

- Built into carrying case for compact storage or transport.
- Conductive frequencies from 512 Hz to 200 KHz.
- Dual output jacks to trace two facilities simultaneously with different frequencies.
- Patented super-inductor antenna outperforms all others when tracing inductively.
- Up to 10 watts of conductive output power on demand.



It's as easy as pushing a button



Screen display shown with back-light turned on

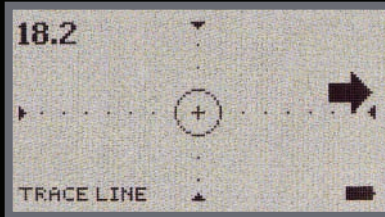


TRIAD 2310
BY GOLDAK

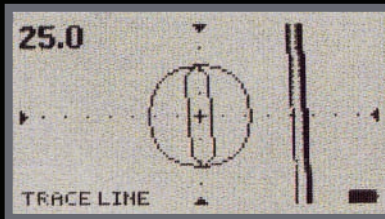


TRIAD

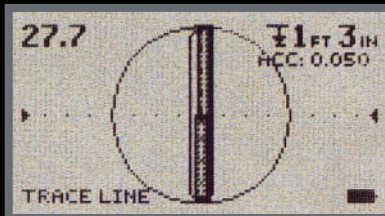
UTILITY LINE/PIPE LOCATING



As you approach the energized line, the receiver will present an arrow icon indicating the direction from which the signal is coming.



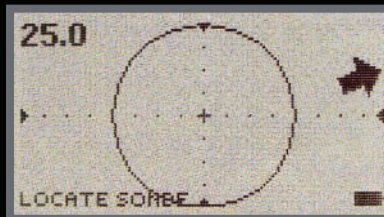
As you move closer to your intended target you will see the line begin to appear on either side of the display screen.



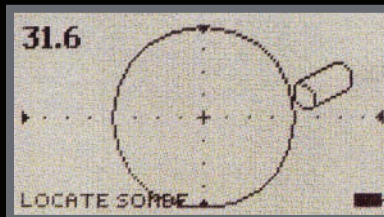
To pinpoint the utility simply center the line image into the crosshairs and the depth will appear automatically in the upper right hand corner.

SONDE LOCATING

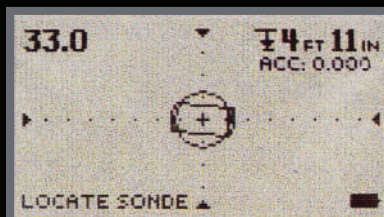
As you approach the energized sonde, the receiver will present an arrow icon indicating the direction from which the signal is coming.



As you move closer to the target sonde you will see its image appear on either side of the display screen.



To pinpoint the sonde, simply center its image in the cross hairs and the depth will appear automatically in the upper right hand corner.



PRODUCT APPLICATIONS

- Line Tracing (pipes, cables, tracer wires, etc.)
- Passive Line Tracing (e.g., power cables and power return paths)
- "Sonde" Locating (coil-type transmitters, camera heads)
- Conduit locating/tracing



PRODUCT FEATURES

- Uncomplicated and intuitive user interface that simplifies and speeds up locating jobs
- Automatic tuning to desired transmitter from audio to 200 KHz
- Single-trigger control
- Constant absolute numerical signal response
- Automatic depth and accuracy reporting
- Unique search and pinpoint graphics for both line tracing and "sonde" locating

TRIAD SPECIFICATIONS

RECEIVER

Frequencies: 50 Hz to 200 KHz
Includes passive modes: 60 Hz Single Phase, 60 Hz 3-Phase, Cathodic Protection and Cable TV (High Voltage passive optional).

Weight: 4.4 Lbs.

Dimensions:

Unfolded: 36" L x 4" W x 10.5" H

Folded: 21" L x 4" W x 10.5" H

Display: Graphic LCD with automatic backlight

Audible Output: Built-in speaker and jack for optional headset

Power Supply: 8 "AA" Alkaline batteries

STANDARD ACCESSORIES

- Direct Connection Cable (DCC)
- Ground Rod
- Operating Manual
- Accessory Bag (with transmitting case only)

OPTIONAL ACCESSORIES

- Headset
- GC-2 Cable Clamp
- Additional Direct Connection Cable (DCC)
- Alternate Antenna Adapter
- External AC Power Supply (15 Watts)
- Car Battery Adapter
- Wide Array of Sonde Transmitters

TRANSMITTER CASE

Standard Frequencies:

Conductive*: 512 Hz, 8 KHz, 33 KHz,
65 KHz, 83 KHz, 116 KHz
126 KHz, 131 KHz, 200 KHz

Inductive**: 65 KHz, 83 KHz, 116 KHz

Weight: 10.5 Lbs.

Dimensions: 24" L x 4.5" W x 12.5" H

Internal Supply: Rechargeable Lithium Ion

Battery Life: 60 Watt Hrs.***

Output Power (nominal):

Battery/ External Source: up to 10 Watts

Operating Temperature: -4° to +158° F (-20° to +70° C)

Notes:

*Conductive frequencies are customizable to any value between 50 Hz and 200 KHz.

**Inductive frequencies are customizable to any value between 8 KHz and 200 KHz.

***Typical. Actual life will vary considerably with output load conditions.

The TRIAD 2310 is also covered under a **manufacturers 3 year warranty**



GOLDAK

Goldak, Inc.

547 West Arden Ave. • Glendale, CA

91203

818/240/2666 • 818/244/6818 fax

www.goldak.com

