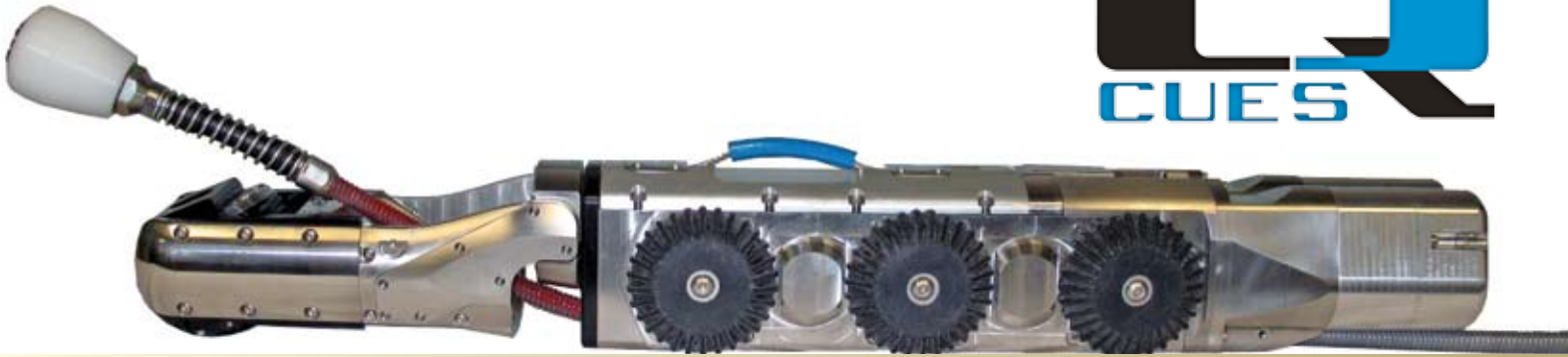


"The Standard of the Industry"



# LAMP II

## *Lateral & Mainline Probe II*

ACCOMPLISH A ONE-PASS MAINLINE INSPECTION  
WITH A SIMULTANEOUS ADJACENT LATERAL INSPECTION!



Inspect Mainlines and Adjacent Lateral Services  
With One Inspection Run!

Lightweight / Compact Wheeled Unit! Pulls 1000 ft.!

Single Point Removal of Wheels!

Easily Fits Into a 6" Line!

- Inspect 6"-15" mainlines and 3"-8" lateral services
- Front mounted pan and tilt zoom camera (40:1 Optical / Digital Zoom) completes mainline inspection and monitors lateral camera
- Lateral camera with built in auto upright feature keeps the image stabilized at all times
- Built-in Sonde in the lateral camera for locating
- Maximum clearance in a 6" diameter line
- Supplied with 3 sets of Wheels for 6"-15" lines
- Optional wheel sets - steel based for high traction
- 80 ft. push cable
- Quick removal and insertion of wheel sets
- Rear tip-up connector
- Compact length



*Easily fits into a 6" line!  
Easily explore 90 degree bends!*